



S.P.E.N.C.E.R.S.P.I.R.I.T

Spencer Park Primary School
Jeremy Hadlow, Principal
Hardie Road, Spencer Park (Albany) WA 6330
Tel 08 6821 3000
spencerparkps.wa.edu.au

We value positive relationships and understanding between students of different cultures and abilities.

Spencer Park Education Support Centre
Rebecca Wheatley, Principal
Hardie Road, Spencer Park (Albany) WA 6330
Tel 08 6821 3050
spencerparkesc.wa.edu.au

NEWSLETTER No. 1

9 February 2023



PRINCIPAL'S POST

Dear Parents and Friends

Welcome back to a new year at SPPS and a warm welcome to any new families commencing this year.

Thank you to all parents and caregivers for helping to make our start a very smooth and calm one. Our students have generally been very settled and have started the new year very well.

Staff Changes

We would like to welcome some new/returning staff commencing this year:

- Ms Georgia Stephenson who will be teaching Yr 1 in Room 24.
- Mrs Monique Mackenzie who will be teaching Yr 4/5 in Room 3.
- Ms Kellee Bagnall who is teaching PP in the PP2 room.
- Mrs Cate Moreton who is teaching Yr 3/4 in Room 2.



Ms Kellee Bagnall



Ms Cate Moreton

Attendance

I would like to remind parents that attendance is an important focus for our school. Please ensure that every student attends school every day that they are well. Missing days of school adds up quickly and can result in your child missing out on important learning. Regular attendance is set at 90%, which means that your child should not be missing any more than 1 day per fortnight. Please make an effort to ensure that your child comes to school each day that they are well and enforce it! Please do not give in to the many excuses that our children provide at different times. Please contact the school if we can assist with helping your child to attend regularly. School is the EXPECTATION and staying home is the EXCEPTION.

Please see the table over the page to see the cumulative effect of missing school:

.../2



Ms Georgia Stephenson Ms Monique Mackenzie

FUTURE DATES

P&C Meeting 6.00pm	Mon 13 Feb
Interm Swimming lessons	Mon 13 Feb to
Rooms 8, 9 & 11 Emu Point	Fri 17 Feb
Assembly Room 8	Fri 24 Feb

90% attendance means student miss	80% attendance means student miss	60% attendance means student miss
<ul style="list-style-type: none"> • 1 day per fortnight • 1 week a term • 4 weeks a year • 1 whole year by the end of Year 9 	<ul style="list-style-type: none"> • 1 day a week • 2 weeks a term • 8 weeks a year • 1 whole year by the end of Year 4 • 2 years by the end of Year 8 • 3 years by the end of Year 12 	<ul style="list-style-type: none"> • 2 days a week • 4 weeks a term • 1 whole year by the end of Semester 1, Year 3 • 2 years by the end of Year 5 • 3 years by the end of Semester 1, Year 8 • 4 years by the end of Year 10

Standards of Behaviour

Continuing to provide a safe and friendly environment for all parents, students and staff is an essential requirement that should be expected of any public venue. The school will continue to enforce positive standard of behaviour with our students and ask that parents and caregivers support this by advocating for our school rules and by being great examples when on school grounds. Areas of focus are the inappropriate comments being used by students, which include but are not limited to:

- Swearing
- Sexualised comments
- Racial comments
- Comments relating to disability or gender
- Comments about body image

Could I please encourage all parents to explain the difference between school behaviour/language and home behaviour/language. It is important that children understand that some behaviour and language that is acceptable at home is not acceptable at school. This 'code switching' is an important skill to learn and apply.

The focus behaviours established for SPPS are:

- Respect everyone and their things
- Care for self, others and our world
- Show people tolerance and include them
- Be honest and trustworthy by taking responsibility for your actions

These behaviours are important for all staff, parents and students to display at all times.

COVID Information

We are still experiencing a small number of students catching COVID. The advice is to keep students' home until symptoms have ceased (approx. 4-5 days) and test before returning to school. The school still has a number of free RATs if required.

Bus Students

Could parents please ensure that students using the bus service are aware of when they are using this service and when they are being picked up by parents. This information is used for the school to provide adequate supervision and record attendance on the bus. If changes are made to bus arrangements can these please be made to the front office by 2.30pm.

Important Dates

Our P&C will have their first meeting for the year on Monday 13 February at 6.00pm. All parents are welcome to come along and participate in the wonderful work undertaken by the P&C.

Our School Board AGM will be held on 9 March at 3.30pm in the conference room. Parents are welcome to attend the AGM part of this meeting.

Have a wonderful fortnight!

Jeremy Hadlow
Principal

VALUES CERTIFICATES

We congratulate the following students who received certificates at Monday's Mini assembly.



Respect	
PP1	Heath
PP2	Linkin
Rm 1	Braxon
Rm 2	Scarlett
Rm 3	Levi
Rm 8	Evie
Rm 9	Vela
Rm 11	Imogen
Rm 19	Pepper
Rm 24	Jaelyn
Rm 25	Shaheen



PRINCIPAL'S PATTERN

Dear Parents and Friends

Welcome back at the start of our first term for 2023. We hope this year will be an exciting one for all. Enjoy the term and Be Safe, Be Friendly and Be Your Best. This year we will have swimming every Friday for the whole year – how exciting is that! Watch this space for the progress of our students as they enjoy the water.

PBS

Spencer Park Education Support Centre Behaviour Expectations

Each week we have an Expectation of the Week focus. This week we focus on:

Be / Best

I can be my Best.



AUSLAN/Key Word Sign

Our key word signs support our Expectation of the Week:

I can be my best in class by following the classroom expectations.



I
Point to self using extended dominant index finger. (Natural gesture).



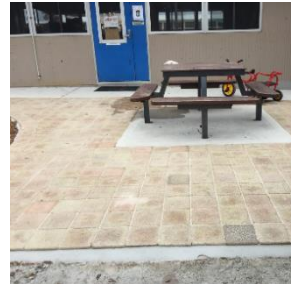
Best
Extend thumbs of both hands and hold in front of body, palms down. Move dominant thumb forward..

EIC PLAYGROUND

We are extremely grateful to a number of people and organisations who have assisted in getting our EIC playground garden re-vamped with plant boxes and their contents and the completion of the paving. The plants such as Rosemary, Scented Pelargonium, Lavender, Lomandra & Kangaroo Paws were chosen particularly for their sensory attributes.

We would like to thank Pat from Albany Community Foundation for assistance with funding and sourcing donations from:

- All Soils (Stevo) – Soil
- Cactus Gallery (Jane Dicks) – Plants
- Lush Gardens (Marshall) – Plants
- Ardess Nursery – Discount on purchases.



NEW TEACHERS

Welcome to our two new teachers, Mrs Marie-Claire Barrett and Ms Emily Cox.

Emily, who was previously one of our Education Assistants, has recently graduated and has now joined us as a Teacher.

Marie-Claire has many years of experience teaching French & English language in Jakarta, Indonesia as well as Indonesian language at Jerramungup District High School.

Her hobbies are being with her family and her gorgeous Pug, as well as being at the beach and reading a good book. She is passionate about providing a sense of belonging for students with educational support needs and making students and their families feel welcome in her classroom and the school.



Rebecca Wheatley
Principal

SECRET CODE

Somewhere within the text of this newsletter we have buried a six-digit code. When you have found the code, SMS 0437 619 154 and include your family name and the code. The first correct answer will win a \$10 canteen credit. Winners will be announced on our Facebook page and receive notification by SMS. With regret, prizes are only available to families enrolled at our school.

VOLUNTARY CONTRIBUTIONS/ P&C CONTRIBUTION

Thank you to all the parents and guardians who have already paid contributions for 2023. Contributions can be made either by cash, EFTPOS, QKR or you can phone your card details through to the office. If you would prefer to do a direct credit you can contact the office for banking details. Please ensure, if paying by direct credit, that you include your child's surname and first name as a description. Centrepay is another easy option for you to setup if you would like to know more just contact the office.

FREE STUDENT/COMMUNITY MEMBERS RATs

Free RATs for students or community members from the government are still available at the front office if you require them.



WHAT'S NEWS!

It's always great to see our students excelling at school and in the community. Does your child participate in a community club or group or joined in a special event? We'd love to celebrate this with you ... why not share your snaps? Email your photos to spencerpark.ps@education.wa.edu.au along with a brief description and we'll publish it in our next newsletter. Already shared on Facebook? Why not make your post public and tag us @SpencerParkPS?

COMMUNITY NEWS

Please note notices appearing below are not necessarily endorsed by the school. We provide this space for community groups to advertise to the school community. It is up to parents to scrutinise the activity and organisers for their child.

Griffins Netball players, parents, coaches, managers, and future players.

A friendly reminder to register for trials before this Friday 27 of January 2023

Griffins netball trials will be held at Albany Leisure Centre

A Grade - Year 10 and above in 2023

Trial 1 - 05/02/2023 12.30 - 3.00pm (Athletes please arrive at 12.15pm)

Trial 2 - 19/02/2023 12.30 - 3.00pm (Athletes please arrive at 12.15pm)

B Grade - Year 7 - 9 in 2023

Trial 1 - 05/02/2023 8.30 - 11.30am (Athletes please arrive at 8.15am)

Trial 2 - 19/02/2023 8.30 - 11.30am (Athletes please arrive at 8.15am)

D Grade - Year 2 - 6 in 2023

Trial 1 - 04/02/2023 2.30 - 4.00pm (Athletes please arrive by 2.15pm)

To register for trials please click on the below link . You must register prior to trialing! If you are not able to make it to a trial date please email netball@griffins.org.au to let us know as early as possible.

You can also find this information on our Facebook Page.

FOOD BANK EMERGENCY FOOD ACCESS SERVICE

FREE CALL 1800 979 777

We're here to help!

Are there families in your school community experiencing food insecurity? The Emergency Relief and Food Access Service (ERFAS) provides members of the community with access to emergency relief, food or financial counselling.

The Access Service is operated by experienced financial support workers who will identify the support that callers are eligible for in their local area, including access to Foodbank and our Mobile Foodbank service.

Families in need can contact the Access Service by calling 1800 979 777 between 9am-5pm Monday to Friday (excluding public holidays).

FOODBANK.ORG.AU

OUTDOORS GREAT SOUTHERN Supported By: Department of Local Government, Sport and Cultural Industries

KIDS Adventure CLUB

Term 1 - 2023
 FEBRUARY - 15/25
 MARCH - 1/8/25
 APRIL - 1

Year 4-6 - Go WIRED! in Nature
 Join us as we take part in activities such as:

- Beachcombing/Warne life identification
- Flora and Fauna identification, Bush care
- Wild animal rescue and care with local carers and what you can do to help
- Geocaching and navigation skills
- Bushfire safety and awareness
- Bush Tucker and shelter building with local elders

Years 1-3 - Young Adventurers!
 Our first ever young adventurers program will see participants take part in fun outdoor activities such as:

- Shelter Building
- Navigation
- Keeping safe outdoors
- Clothing and equipment
- Nature hikes and scavenger hunts

Year 1-3
 Session Time - 1.30 - 5.00
 Cost: \$100

Year 4-6
 Session Time - 1.30 - 4.00
 Cost: \$190 (Returning Participants)
 \$210 (New Participants)

FOR DETAILS, VISIT outdoorsgreatsouthern.org.au/events



Is your child starting kindy or pre-primary in 2023?

If you have developmental concerns about your child, or your child has already received a diagnosis, **MyTime** might be the parent group for you!

MyTime is a place where you can unwind, and share ideas and experiences with others who understand. We meet Wednesday mornings during the school terms.

For more information, contact us on 98430077 or email greatsouthern@wanslea.org.au

CRECHE NOW AVAILABLE

We are delighted to offer a Creche service for the following meetings for Term 1.

TERM 1
 All meetings are held on Wednesdays from 9:30—11:30am at 26 Prior Street Albany

If your interested in coming, please get in touch the week before to confirm your place.

WEDNESDAY 1ST MARCH	WEDNESDAY 30TH MARCH
Project Focus We will have a simple activity	Coffee and Chat

Contact: Kerry Harvey, call 08 98430077
greatsouthern@wanslea.org.au

Disabled Surfers Association Great Southern 2023

'Let's Go Surfing Days'

Volunteers always welcome
 Register from 9am, in water 9:30am -11.30am
 12 noon - presentations and free BBQ
Saturdays - Middleton Beach, Albany
Jan 14th, Feb 18th, March 11th, April 1st
 Please register surfers, carers and volunteers
www.eventbrite.com.au/e/lets-go-surfing-2023-registration-466727633917
 Catering for All Abilities/ages, beach wheelchairs and accessible changing facilities Supported nationally disabledsurfers.org
www.facebook.com/DisabledSurfersGS

BEACHES OF KINJARLING

SCAN AND FIND YOUR BEACH.

Find the best beach, right now!

Shelter ratings updated every 15min

WHO LIKES SAND IN THEIR FACE?

Not me. Beaches of Kinjarling is a website that highlights the iconic beaches of the Great Southern and rates the current conditions based on a specially designed algorithm.

The website also highlights the restored Menang Noongar Place Names recently undertaken in the Great Southern area. A detailed map has been created to show the site locations and its new dual European / Menang name.

The draw card of the site is the incorporation of weather data to notify visitors and locals when the best time to visit a particular beach based on the wind direction, wind speed and various other data points.

A real time beach rating system doesn't exist on any tourism based site in Australia.

WWW.BEACHESOFKINJARLING.COM.AU